

RIDERS INFORMATION

GlemmRide, 03. – 07. Juli 2019

We look forward to welcoming you to the fifth GlemmRide Specialized Rookies Cup and Downhill. You will find all important information below.

ACCREDITATION & INFO

The accreditation at the GlemmRide Office is located in the Hotel Alpine Palace directly in the centre of Hinterglemm

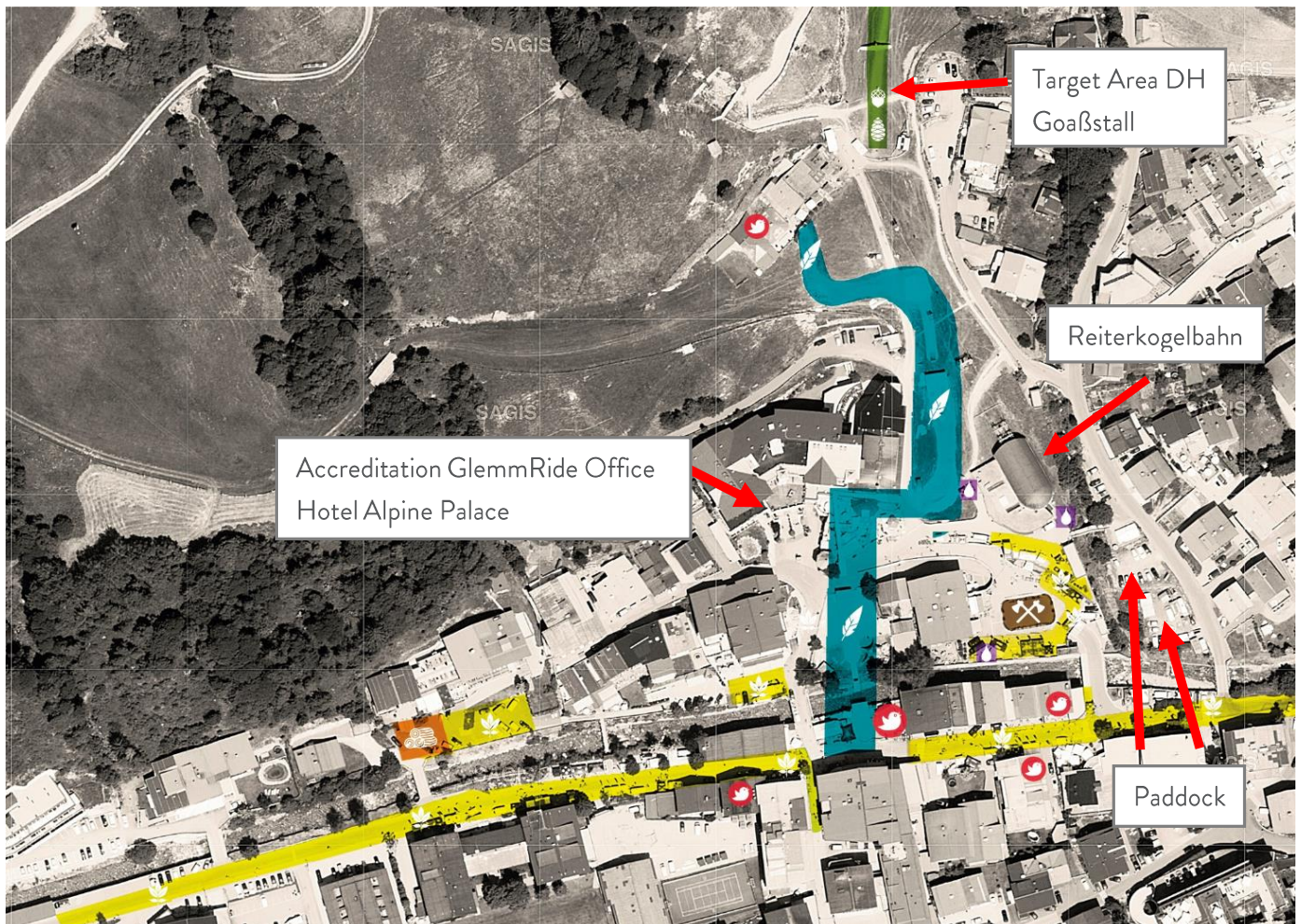
Opening Hours:

| | |
|--------------------|-----------------|
| Thursday, 4th July | 13:00 – 18:00 h |
| Friday, 5th July | 08:00 – 18:00 h |
| Saturday, 6th July | 07:30 – 18:00 h |
| Sunday, 7th July | 08:00 – 14:00 h |

Start Number Distribution:

| | |
|--------------------|-----------------|
| Friday, 5th July | 10:00 – 18:00 h |
| Saturday, 6th July | 07:30 – 10:00 h |

Plan 1



TIMETABLE

FRIDAY, 5th July 2019

| | |
|---------------|---|
| 08:30 - 12:00 | PRO Line closed (because of maintenance work) |
| 10:00 - 18:00 | Start Number Distribution (at GlemmRide Office) |
| 12:00 - 15:45 | PRO Line open (individual Training) |
| 16:00 - 17:00 | PRO Line closed - final works on the track |
| 17:00 - 19:00 | Track Walk |

SATURDAY, 6th July 2019

| | |
|---------------|---|
| 07:30 - 10:00 | Start Number Distribution (at GlemmRide Office) |
| 08:00 - 14:00 | Compulsary Training - 2 runs (only with start number) |
| 14:00 - 14:30 | Course closed off |
| from 14:30 | Seeding Run* (with starting times) |

SUNDAY, 7th July 2019

| | |
|---------------|---------------------------------|
| 08:00 - 11:00 | Official Training |
| 11:00 - 11:30 | Course closed off |
| from 11:30 | Finals* |
| Followed by | Award Ceremony at the Mainstage |

*Trail afterwards closed (Saturday because of maintenance work, Sunday because of dismantling)

PADDOCK

There are 2 PADDOCK AREAS (see plan 1). In these areas it is not possible to stay overnight and the paddock is only to be used by the various teams as working stations.

Please note that only a limited number of places are available and they are awarded according to the principle "first come - first served".

CAMPING

There is a camping area at the Sportzentrum in Hinterglemm (Glemmtaler Landesstraße 401, 5754 Hinterglemm, see plan 2). This is not an official camping area, due to the fact that we are unable to provide electricity. We kindly ask you to keep the area clean and tidy!

Here you can use the shower and toilet facilities all day long from Wednesday until Sunday. Please note that the showers are not to be used as a bike wash, there is a separate bike washing facility.

The camping fee should be paid as soon as you arrive in resort at the Tourist Office Saalbach Hinterglemm (Glemmtaler Landesstraße 550, 5753 Saalbach). Once you pass the Saalbach village sign, you will find the Tourist Office approx. 100 m on the right hand side (just passed the BP petrol station and small chapel).

Once payment has been made, you will receive written confirmation which you should place in your vehicle behind the windscreen where it is visible.

Camping fee (per vehicle):

Wednesday until Sunday: € 25.00

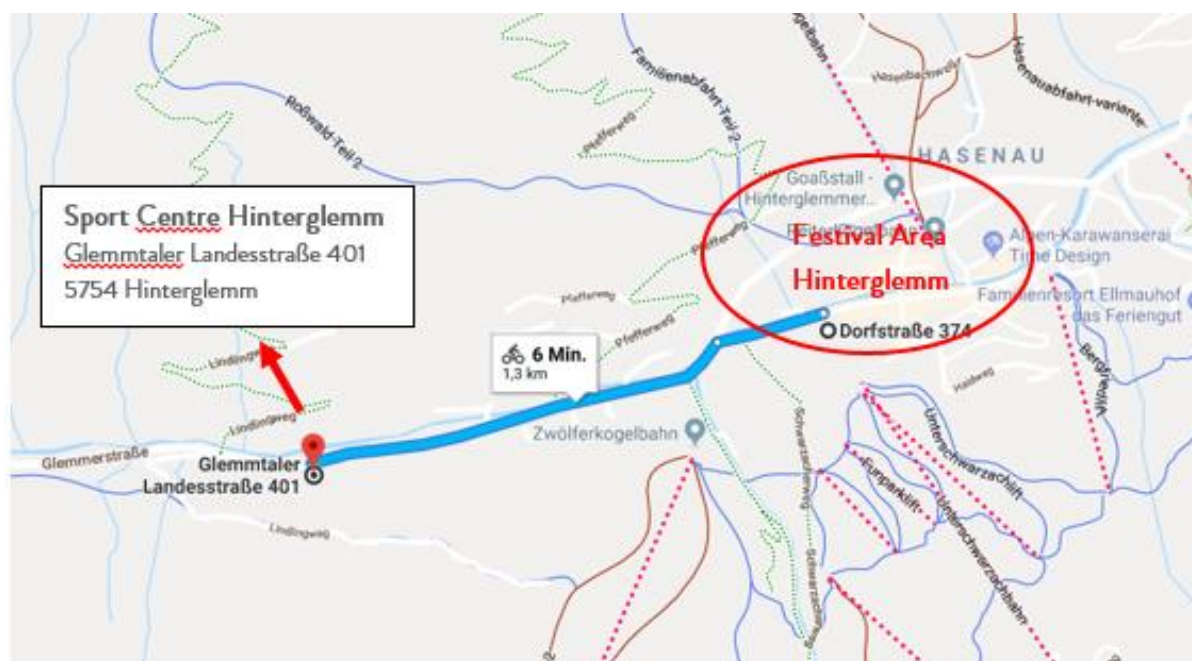
Thursday until Sunday: € 20.00

Friday until Sunday: € 15.00

Saturday until Sunday: € 10.00

Please note that only a limited number of places are available and they are awarded according to the principle “first come - first served”. **Please save space and observe the parking regulations!** (front of the vehicle to be parked either facing the river or the tennis center).

Plan 2:



IMPORTANT! When you register for the race you are only permitted to use the Reiterkogelbahn. Therefore, we recommend you make a reservation in accommodation of one of the Joker Card Partners, whereby you will be able to use all operating lifts free of charge. A day ticket for the bike park Saalbach Hinterglemm for adults would cost € 44.00 and for this price you should be able to find reasonably priced accommodation. To find out more about accommodation and the Joker Card, please see: <https://saalbach.com/glemmride>